



WITTWER
CONSTRUCTION
STILLWATER, OKLAHOMA

Dan Wittwer, Pres./CEO

Ron Wittwer, Exec. VP

Ron Zerr Vice-President

Connie Griffin, Sec./
Treasurer

**Wittwer Golf Outing
May 20th**
Contact Brad Griffin
(405-620-3050) for
More Information



**INSIDE
THIS ISSUE:**

- Safety and Health 2
- HR/ Payroll 2
- Edmond Wal-Mart 3
- Gilcrease Expressway 3
- LSI Texas SH130 3
- ODOT News 4
- Cement Production 4
to Increase
- \$1.4 Billion Bridge 4
- ODOT Installs New 4
Highway Signs
- Pay Dispute Closes 4
Job

The Wittwer Way

W I N T E R 2 0 0 6

M A R C H

Wittwer Opens New Offices

As Wittwer grows and expands its market territory, the company has increased its office space.

In March, Wittwer opened a Texas office in Austin. Its hoped that this office will allow the company to better serve its Texas clients and also provide needed support and resources for the Texas crews. DeWayne Warner will continue to manage the operations of the Texas crews and will work out of the Austin office. Wittwer currently has one crew solely based in Texas, with Oklahoma crews rotating in as needed.

Wittwer has also acquired office space in Ft. Gibson, Oklahoma. This office will provide additional space for the human resource staff cur-

rently working out the Fort Gibson office. Telephone and fax numbers, and mailing address of the Fort Gibson office will not change. Wittwer takes possession of the property on May 1 and will move in sometime after that date.

Address for the Texas office is 4202 Santiago; Austin, TX 78745. Phone number is 512-707-2460



Fort Gibson Office

OSHA Inspects Two Pro-

We were overlooked in 2005, but 2006 has started with two OSHA inspections. The first was a program audit conducted by the Austin, TX office of OSHA. A field inspection was conducted on the Snyder project. Neither inspection resulted in citations.

Productive Winter

Although the warm, dry winter caused hardships for many Oklahomans and Texans, its been great for the Highway Construction Industry. Wittwer has had one the most productive winter seasons in its history.

Fuel Storage Facility

In an effort to cut fuel expenses and save time, Wittwer is installing a diesel fuel storage and transfer facility. The tanks will be located west of Stillwater and will be available for Superintendents to fill their truck mounted transfer tanks.

Snyder Ahead of Schedule

In January, Wittwer began work on Highway 183 in Snyder, Oklahoma. Wittwer is the general contractor overseeing the improvements which include construction of a span bridge, several box culverts, installation of a new storm water drainage system, new asphalt paving, and sidewalks. This is one of Wittwer's largest projects as a general contractor.

David Burns is the onsite project manager and being assisted by Shad Hane and others in the Stillwater office. Before the project is complete most Wittwer employees will have had a part in its completion. Subcontractors on the project included APAC-Oklahoma (asphalt

paving) and K and R Builders (span bridge). The weather and the coordinated efforts of the subcontractors have resulted in the project being well ahead of schedule.



Drainage Pipe Installation
Snyder, OK

New Computer Systems

New computer systems are being installed in the Stillwater office. This system will increase the efficiency of our email system and may eventually allow all supers and foreman to have their own email address.

SAFETY AND HEALTH

Safety Banquet has been rescheduled for May 20th. It will be held at the Payne County fairgrounds in Stillwater.

HR/Payroll News and Announcements

401K Enrollment—if eligible employees would like to participate in the 401K program or increase their deferral percentage, now is a good time. Contact Evilin at the Ft. Gibson office.

8 Principles of a Safe Workplace

1. Safety is an ethical responsibility.
2. Safety is a culture not a program
3. Management is responsible
4. Employees must be trained to work safely
5. Safety is a condition of employment
6. All injuries are preventable
7. Safety programs must be site specific with recurring audits of the workplace and prompt corrective action
8. Safety is Good Business.

Accidents in the News

Man Steps in Path of Truck—Jefferson Hutchins, 56, died from multiple trauma about 7:50 a.m. near 3681 Mississippi 16 East, Breeland said.

Hutchins worked for a private construction company that was working near the Farm Haven community.

Breeland said it appeared Hutchins, who was doing work on the side of the road, stepped into the road as the truck was backing up.

Man Killed by Backhoe— A construction worker was killed Friday evening when he became pinned under the arm of a backhoe at a home construction site on the 15000 block of McCourtney Road.

The man had been operating the machine by himself and had apparently walked around to the back when he became entangled in the mechanisms.

Man Rescued after falling into trench— Rescue teams worked for about one hour to pull a construction worker to safety after he fell 20-feet into a construction trench near I-215 and north Decatur.

The man was airlifted to UMC. He was a bit groggy and complained of some pain but officials say the worker did not suffer any life threatening injuries.

Crews at the scene say it is lucky that the accident wasn't worse. The machine operator was working with equipment in the area near I-215 and North Decatur when he got out to take some measurements and he then either tripped or slipped and fell into the trench.

DEFENSIVE DRIVING

Over the summer several defensive driving classes will be offered.

Any Wittwer driver who hasn't taken a defensive driving class in the last 2 years should enroll.

This class can save you money on your personal auto insurance

Forklift Recertification

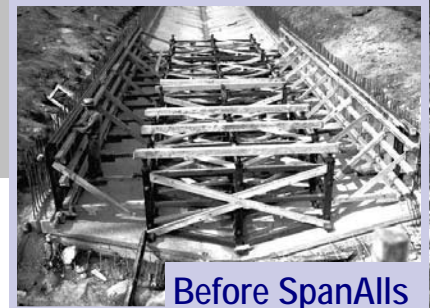
Several employees need to be recertified. Safety personnel will be contacting superintendents and arranging times and places for the recertification of their employees

The National Association of Safety Professionals (NASP) has identified what it considers to be eight principles of a safe workplace. Those eight Principles are listed at the left.

In this newsletter one of those principles is presented in more detail. Additional principles will be covered in future newsletters.

Eight Principles of a safe Workplace

Principle #1: Safety is an Ethical Responsibility—At its core, ethics holds up a positive vision of what is right and what is good. It defines what is "worth" pursuing as guidance for our decisions and actions. Workplace injuries and deaths are too often seen in the abstract as statistics. But when it happens to someone we love, we suddenly see the reality of the horrible pain and suffering and its widespread effect. It is our ethical responsibility to do what is necessary to protect employees from death, injury, and illness in the workplace. This is the only foundation upon which a true safety culture can be established in any workplace



Before SpanAlls
1930s Box Culvert



Project News

Edmond Wal-Mart

The scope of work for this project involves Wittwer installing approximately 9,500 linear feet of pipe below the Wal-Mart parking lot.



Nick Taylor's Crew Installing Pipe Edmond Wal-Mart

The pipe is used to store the storm water from the parking lot. This is in lieu of typical commercial projects that use open detention ponds. According to Con-Tech Piping of Kansas City, (Wittwer's Pipe Supplier) this is the largest underground storage system designed and constructed in the State of Oklahoma. The system also includes Wittwer installing the water filtration system. The filtration system treats the water before flushing onto Public Right of Way.



Gilcrease Expressway, Tulsa

New Jobs Awarded in 2006

The following jobs have been awarded to Wittwer Construction in 2006. It's early in the year and more are sure to come.

Mountain Park Oklahoma with APAC-Oklahoma.

Marshal, Arkansas with Gilbert Central.

Blackwell, OK with Duit Construction

Perry, OK, Wittwer is prime.

Target Supercenter in Norman with Silverstar Construction

Bryan, TX with Young Contractors

US 277 in Texas with Zachry Construction

Wal-Mart Supercenter in Stillwater with Crossland Construction

Amarillo, TX with Duit Construction

Hwy 18, Shawnee, OK with Duit Construction

Asher, OK with Cummins Construction

Safe Jobsites

Wittwer's philosophy is that a job well done, is a job without injuries.

This year has been the best in five years. To this point there has only been one recordable injury.

Keeping employees safe is the "right" thing to do and also makes the company more profitable.



Gilcrease Expressway, Tulsa

In the Fall of 2005 Ronnie Zerr, and Wayne Anderson started work on the Gilcrease Expressway extension in Tulsa. When complete the expressway will provide a north-side loop connecting interstates on the east and west sides of the city.

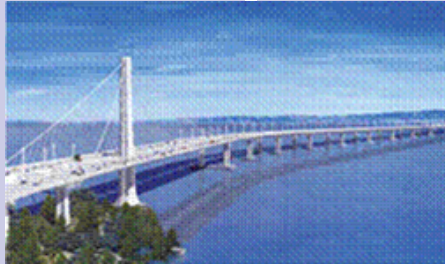
Wittwer's part of the project has included the construction of 4 large box culverts.

Texas SH130 Tollway

Lone Star Infrastructure has extended its contract with Wittwer Construction. The contract extension will result in Wittwer building approximately 5 additional box culverts on the SH130 tollway project.

Controversial Bay Area Span Brings in Two Bids

Much to the relief of California transportation officials, two bids came in March 22—close to engineer's estimate—for the controversial self-anchored suspension span (SAS) portion of the \$6.3-billion Oakland-San Francisco Bay Bridge. Construction could begin as soon as May 2007 on the \$1.4-billion SAS section, nearly scrapped a year ago.



Coraopolis, Pa.-based American Bridge Co., which led a joint venture that submitted a sole, rejected bid for the SAS section two years ago, is now teamed with Aliso Viejo, Calif.-based Fluor Enterprises Inc. Their bid came in at \$1.43 billion—slightly lower than the California Dept. of Transportation's revised estimate of \$1.45 billion.

The second bid, by a joint venture of Kiewit/Koch Skanska/Manson, was for

\$1.68 billion. Vancouver, Wash.-based Kiewit Pacific Co. is lead in a joint venture currently working on the bridge foundations and the skyway segment.

Caltrans officials, eager to avoid another sole bid situation, extended and sweetened the bidding process by adding a \$5-million stipend to qualified bidders. Officials will now

take the next month to review the bids, paying close attention to the subcontractor credentials, bonding and insurance provisions, says spokesman Bart Ney. Once the 30-day review is complete, mobilization of the contractor to a site in Oakland and intensive engineering design work will begin.

Pay Dispute Closes Chicago Job

Chicago's Block 37 project shut down last month after a financial dispute escalated between contractors and Arlington, Va.-based Mills Corp., which is developing the prime real estate in the city's central business district. Earlier this year, questions arose about Mills' financial solvency. On March 22, the company disclosed that it is under a U.S. Securities and Exchange Commission probe. An official in the city's planning department says earthwork will resume on the site after the matter is resolved "within a couple of weeks." Officials at Mills and local general contractor W.E. O'Neil Construction Co. declined to comment. A local subcontractor says, "We all want the project to move forward."

Cement Plants Expand Capacity; Production To Rise Nearly 18 Percent by 2010

U.S. cement companies are currently engaged in an aggressive \$3.6 billion expansion that will increase the production capacity of a key ingredient in the production of cement by 16.2 million metric tons by the year 2010. According to a report issued by the economic research department of Portland Cement Association, this represents a 17.3 percent increase in capacity compared to 2005 levels.

Oklahoma Transportation Commission Wrap-Up March 6, 2005

The transportation commission awarded several projects, the first a \$12.5 million project to widen a four-mile section of SH-18 just north of I-40 near Shawnee. The project was awarded to Duit Construction, of Edmond, and is expected to take 380 calendar days. An \$8 million, 400 calendar-day contract to rebuild a section of SH-128 and six bridges in LeFlore County was awarded to Plains Bridge Contracting of Yukon. In addition, a \$4.6 million, 250 calendar-day project was awarded to Cummins Construction of Enid to resurface and add shoulders to four-miles of SH-3W south of Asher in Pontotoc County from SH-59A to US-177.

Commissioners awarded a \$3.4 million project to TTK Construction of Edmond for a gate improvement at Ft. Sill in Lawton. The project includes constructing a new local road from Gate 2 to US-62, a new off-ramp from I-44 to westbound US-62 and traffic signal modifications and is anticipated to last 255 calendar days. The commission awarded a \$630,000 intersection and signal modification for SH-9 at 24th Ave. S.W. in Norman. The project was awarded to Shell Construction of Oklahoma City.

New Highway Sign Being Installed

Officials with the Oklahoma Department of Transportation Friday unveiled new state highway markers in Tulsa and Oklahoma City that will be installed across the state. This is the first time the agency has implemented a new design for the signs since the 1950s. The new design will feature the familiar large numerals, letting motorists know the highway number, but instead of putting them inside a circle, they will be superimposed on an outline of the state.