



WITTWER  
CONSTRUCTION  
STILLWATER, OKLAHOMA

Dan Wittwer, Pres./CEO

Ron Wittwer, Exec. VP

Ron Zerr Vice-President

Connie Griffin, Sec./  
Treasurer

# The Wittwer Way

FALL 2006

DECEMBER

## MERRY CHRISTMAS FROM DAN AND TRACEY WITTWER

What a year this has been! I am thinking back over the last twelve months about all of the projects Wittwer Construction Company has been involved with. We started off the year with a shotgun beginning in Snyder, Oklahoma where we were prime contractor on an 11 mile widening project. With the help of APAC Asphalt, we were able to earn a substantial early completion bonus. Some other projects that stand out are the Stillwater Wal-mart, the west endzone of the Boone Pickens Stadium, the Dell box for OKC and the big box on I-40 at Shawnee, OK. The list could go on and on.

higher. We have developed new markets that are exciting. Opportunities continue to come our way providing a nice back log of new work for next year.

There are many changes in the works at WCC. I have never been more excited to be a part of our organization. I want to personally thank you for being a part of a good company that is on it's way to becoming a GREAT company.

Have a Merry Christmas and may God bless you and your family this holiday season. I look forward to working with you next year.

Dan Wittwer

### FROM TRACEY

I have never had more pride in Wittwer Construction Company than I have this past year. Typically, you all are working in towns, cities and states away from Stillwater. This year I don't drive anywhere in Stillwater without passing by a WCC project. Because Dan and I reside on Lakeview Road, I drive through the Lakeview project several times a day. I work for the athletic department at Oklahoma State University so I witness your work there daily as well. The administrators at OSU including President Schmidly and Vice-President/Athletic Director Mike Holder have the highest respect for all of you that are working so hard for the company. I am so thankful that WCC is involved in all of these local projects that are making Stillwater and OSU a better place!

I pledge my prayers daily for your safety. I wish you a very Merry Christmas and a very blessed New Year.

### INSIDE THIS ISSUE:

- Safety and Health 2
- Eight Principles 2
- I40 Shawnee 3
- Pickens Stadium 3
- Williamson Farms 3
- ODOT News 4
- Hydronic Heat 4
- Industry Fatalities Down 4
- Cement Prices Increase 4
- Demand for Heavy Equipment 4



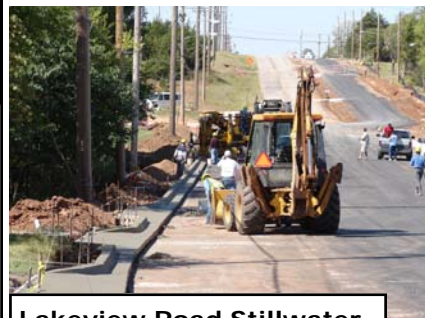
Stillwater Wal-Mart—Tim Riggs



Norman Medical Center—Josh Meraz's crew

### Wittwer Hires Concrete Plant Manager

Tom Whitney has recently joined Wittwer Construction to oversee the company's three concrete plants. Tom comes to Wittwer after spending many years with Dolese and Mid-Continent.



Lakeview Road Stillwater Dennis Cooke, Dustin Heidrich

If Employees are ever unsure about the safety of a task they should not proceed until contacting Noe Reyes or Doug Martin

# SAFETY AND HEALTH

## EXCAVATION BASICS

**Cave-In Protection:** Excavations 5 or more feet in depth must have cave-in protection

**Egress:** Excavations 4 or more feet in depth must have means of egress within 25 ft. of employees

**Perimeter:** All material, equipment, and tools must be at least 2 ft from edge of excavation

## 8 Principles of a Safe Workplace

1. Safety is an ethical responsibility.
2. Safety is a culture not a program
3. Management is responsible
4. Employees must be trained to work safely
5. Safety is a condition of employment
6. All injuries are preventable
7. Safety programs must be site specific with recurring audits of the workplace and prompt corrective action
8. Safety is Good Business.

## Crane Firm Settles in Workers Death

Anthony Crane Rental of Fort Worth, TX has settled for 3.1 million dollars with the survivors of a man killed when a crane boom collapsed.

A former employee of Anthony disclosed that unauthorized modifications had

**Equipment Cannot be Modified or Altered Without the Written Approval of the Manufacturer**

been made to the crane prior to the collapse. Anthony had been fighting the survivor's claim prior to the deposition given by the former employee.

## Mine Worker Killed by Grader

A mine worker was ran over and killed by his own motor grader. The accident occurred last summer at a mine in Kentucky when the operator of the grader stopped to talk with a co-worker.

In response to several fatal accidents attributed to employer negligence, Massachusetts has proposed making the willful negligence of workplace safety a felony offense. The goal of this proposal is to hold owners, project managers, superintendent and others with decision making power, accountable for workplace safety by issuing more severe punishments.

## Workplace Negligence a Felony?

It is already possible for decision makers to face criminal prosecution, but workplace accidents are rarely referred to the criminal courts. The Massachusetts proposal would make it easier for the legal systems to pursue criminal charges

## Crane Collapse in Bellevue Washington

A 210 ft. Liebherr tower crane collapsed while

being used in the construction of an 18 story office complex. The crane fell onto a neighboring apartment building, killing a resident. Wind and structural failure a being investigated as contributing factors.

**WILLFUL NEGLIGENCE:** Knowing that a workplace hazard exists (based on OSHA regulations) and doing nothing to correct the hazard and protect employees. Examples would include allowing employees to work 6 or more feet above the ground without fall protection or allowing employees in an excavation 5 or more feet deep without cave-in protection.

The National Association of Safety Professionals (NASP) has identified what it considers to be eight principles of a safe workplace. Those eight Principles are listed at the left.

In this newsletter Principles four and five are presented in more detail. Additional principles will be covered in future newsletters.

## Eight Principles of a safe Workplace

**Principle #4: Employees Must Be Trained to Work Safely.** Awareness of safety does not come naturally; we all need to be trained to work safely. Effective training programs both teach and motivate employees to be a productive part of the safety culture.

**Principle #5: Safety is a Condition of Employment.** The employer must exhaust every reasonable means to lead, motivate, and train, and prepare employees to maintain a safe workplace. But, in the event the employee refuses to take the actions required to work safely, the employer must utilize a system of progressive discipline to enforce safety requirements and ensure the cooperation of the employee or the removal of the employee from the workplace is necessary in order to protect the employee and their coworkers.

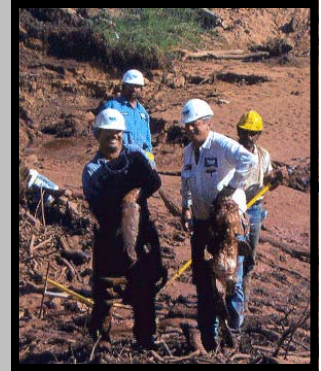


# Project News



## *I-40 and SH 102 Shawnee*

**Oklahoma**—project started in August and is currently near completion. Tim Riggs, Ron Zerr and Wayne Anderson are project superintendents. The bulk of the project consists of box culverts that will replace existing Interstate 40 bridges.



**Williamson Farms Development, Oklahoma City**—started in the fall of 2006 and will include several box culverts and storm water drainage systems. Superintendents include Mike Anderson and Ron Dilley



**Pickens Stadium Stillwater, Oklahoma**—Wittwer began moving over 100,000 cy of material in August. In addition to the dirt work, the project includes several concrete structures including a large, drive-thru tunnel and a lift station.

## Decline in Construction Fatalities

The number of construction workplace fatalities decreased 4% last year, but construction still had the largest number of on-the-job fatalities of any occupation. The latest data from the Bureau of Labor Statistics, released August 10, 2006, indicates there were 1,186 private-industry construction deaths in 2005. Although the overall trend is downward, highway construction deaths have increased the last 3 years. The segment of the industry with the biggest decrease in fatalities is roofing. Roofing related fatalities were down 44% from 2004 to 2005.



## Wittwer Truck Rear Ended

The driver a Ford F-150 was severely injured when he rear ended a truck driven by Tim Dorl. Accident investigations suggest the driver was speeding and unable to stop. The accident occurred on SH-51, while the Wittwer truck was turning into the Pickens Plant facility.

## Cement Prices Post Strong Year-End Gains

Cement producers continue to defy tradition by pushing through price hikes during the second half of the year. Before 2005, cement prices were extremely stable, with a modest spring price hike followed by an early summer adjustment. This year, prices have increased steadily through the last four months of the year. This December's 0.9% increase lifted ENR's 20-city average price 7% above a year ago, when it posted a 5% annual increase. Ready-mix concrete prices have followed a similar trend and are up 6% for the year.



**Hydronic heat helps in Woodrow Wilson Bridge project** A project director in charge of the rebuilding of the Woodrow Wilson Bridge in Virginia turned to a Ground Heaters hydronic heating system to allow for a suitable cold-weather concrete curing environment on the bridge. The process isn't cheap, however -- including equipment, insulating blankets, fuel and labor, the cost of using hydronic heat was about \$500,000. When complete the bridge will be a 12 lane, twin span structure with a projected cost of \$2.4 billion.

THIS IS NOT WITTWER—Somewhere in Western, Kansas



## Demand for Big Iron Slowing Down

For the first time in four years, the supply of new construction equipment is catching up with demand. While the softening housing market has put a damper on new machinery sales, some heavy machines will remain in tight supply in 2007, say manufacturers. Contractors will likely buy even more machinery next year, but various estimates indicate that the average rate of increase in the U.S. will probably fall below 5%, a sign that the construction industry has enough equipment to keep up with backlogs. Declines in single-family housing have already dragged down small equipment sales, such as skid-steer loaders, but nonresidential construction will continue to keep large equipment, such as lattice-boom crawler cranes, in high demand through next year, say manufacturers.

## ODOT November Commission Wrap Up November 6, 2006

ODOT director Gary Ridley told commissioners personnel are working to re-write the agency's eight-year construction plan in light of recent in increase in appropriations and costs. Officials expect the amount of state funds going to the agency will double in the next five years—first major increase since the mid 1980's.

Commissioners voted to approve a \$3.5 million program to improve Wheat Capitol Road near Vance Air Force Base in Enid. Commissioners also voted to approve construction contracts to rebuild a six-mile stretch of I-35 at the SH-51 junction near Stillwater. The project will cost \$18.7 million and will incorporate rebuilding the junction with SH-51, including interstate bridges. Project completion is expected by the Spring of 2008.

In addition, commissioners approved a series of improvements to 24 county bridges. In all 19 contracts were awarded in 14 counties including Adair, Beckham, Canadian, Cleveland, Dewey, Ellis, Murray, Oklahoma, Okmulgee, Payne, Pittsburg, Sequoyah, Washington, and Woods.