



WITTWER CONSTRUCTION
STILLWATER, OKLAHOMA

Dan Wittwer, Pres./CEO

Ron Wittwer, Exec. VP

Ron Zerr Vice-President

Connie Griffin, Sec./
Treasurer

**INSIDE
THIS ISSUE:**

- Safety and Health 2
- Eight Principles 2
- Injury Rates 2
- Insurance Claims 2
- Local Trench
Cave-In 2
- Project Photos 3
- Fall Death 4
- NASCAR Track 4
- Illegal Immigration 4
In Mississippi

Special Recognition

Martha Laws, a past recipient of the Mistler truck driving award, recently completed her 5th year of employment with Wittwer Construction. In those 5 years of driving trucks for Wittwer, Martha has not had a single accident.

The Wittwer Way

SUMMER 2007

JULY

Pickens Fuel Facility Opened

In 2005 Wittwer superintendent, Tim Riggs, suggested the development of a fueling facility that would allow Wittwer employees to fuel company vehicles and transfer tanks before going to the job sites. The fuel facility, under the supervision of Jason Shepherd was built, and opened in the Spring of 2007. This facility, as Tim envisioned, saves the company time and a substantial amount of money.



Record Turnout at Safety Banquet

Over 180 employees and family turned out for this year's safety banquet. A large number of employees were honored for safe driving and job site safety in 2006. In addition, Leland Wilson, was named the outstanding truck driver and received the Virgil Mistler, Jr. award.

A shotgun raffle held at the banquet netted \$1000.00 that went into the Gary Hake Memorial Scholarship fund. Dan and Tracy appreciates all who contributed by purchasing a raffle ticket. Ron Zerr won the shotgun.

Letter From Dan

Summer is upon us and I can assure you I am looking forward to a lot of hot and dry in our weather forecasts. Since January we have been battling the elements; sub zero temps, a 3 week ice storm, and torrential rain for days on end. I know you have felt the impact individually by the minimal number of hours we have been able to work the first six months of '07. The Company has so much work lined up, with any decent weather this Summer and Fall I think we can match last year's volume and profit.

We have some exciting opportunities ahead of us. Ron Dilley's crew is working on a job in Okfuskee Co. that should yield a \$90,000 early completion bonus, and on July 23rd we'll kick off a project with Duit in OKC that has a potential early completion bonus, of which our share could be as high as \$120,000. In May we received two contracts with ODOT: a project in Custer Co., in the city of Clinton for \$9.4 million and a project in Seiling, OK for \$4.2 million with J&R Sand. Our Share of the potential bonus on this job is \$330,000. Both projects are very similar to the Snyder job we built in '06. In the month of June we received contracts in Stillwater totaling \$1.2 million and also another Wal-Mart site project in Glenpool that involves moving around 250,000 cy of dirt.

So, as you can imagine we need a lot of hot and dry weather. I am confident we will get plenty over the next three months. The 2nd half of '07 should be as exciting as the 1st half has been frustrating. Let's strap on our work belts and go after all the opportunities that we have before us.

Dan Wittwer

If Employees are ever unsure about the safety of a task they should not proceed until contacting Noe Reyes or Doug Martin

SAFETY AND HEALTH

LADDER SAFETY

Ladders must be in safe working order, no defects.

Ladders must be set up in such a way that they cannot fall over.

Ladders must extend at least 36 inches above the landing area.

Must not work from a ladder without fall protection.

Must maintain three points of contact with the ladder at all times

Take your time climbing up and down

Do not carry tools or material while climbing

8 Principles of a Safe Workplace

1. Safety is an ethical responsibility.
2. Safety is a culture not a program
3. Management is responsible
4. Employees must be trained to work safely
5. Safety is a condition of employment
6. All injuries are preventable
7. Safety programs must be site specific with recurring audits of the workplace and prompt corrective action
8. Safety is Good Business.

The National Association of Safety Professionals (NASP) has identified what it considers to be eight principles of a safe workplace. Those eight Principles are listed at the left.

In this newsletter Principle six is presented in more detail. Additional principles will be covered in future newsletters.

Eight Principles of a safe Workplace

Principle #6 ALL INJURIES ARE PREVENTABLE:

Sometimes accidents occur without the apparent indication of fault or blame. But there is always some chain of events that occurred leading up to the accident that, had we realized the eventual outcome, someone could have interceded. The fundamental belief that injuries are, by their nature, preventable is a catalyst that encourages us to prevent injuries.

It Pays to Work Safe

Injury rates have been on a downward trend over the last several years. In 1989 Wittwer had one injury for every 5,000 hours worked; 1993, 1 injury every 7,500 hours; 1999, 1 injury every 12,000 hours; and 2006, 1 injury every 30,000 hours.

This is a spectacular improvement and it is all because of the efforts of everyone in the company, especially the men and women driving the trucks, swinging the hammers and pouring the concrete. Keep working safe and the company will continue to benefit from your efforts.

Insurance claims paid by CNA, Wittwer's underwriter for Auto, Theft and General Liability have decreased dramatically.

Claims Paid by CNA:

2005 — \$144,000

2006 — \$21,000

2007 (so far) — \$0

This is because you all are being safe drivers and being careful with company property.

Trench Cave-In

A construction worker was lucky to be alive after a trench cave-in buried him up to his neck. The trench caved in while the employee was 8 ft. deep, laying plastic drainage pipe. No trench box, sloping or shoring was used to protect the employee. The accident occurred May 24, at a Sand Springs job site.



Project Gallery



Seminole Feb. 2007



Pickens Concrete Plant March 2007



Pickens Stadium May 2007



Inola April 2007



Pickens March 2007



Austin TX Jan 2007



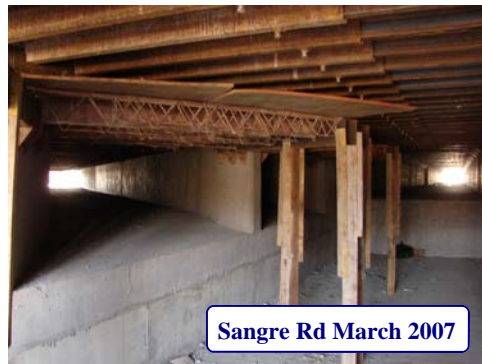
Norman Airport May 2007



Inola Jan. 2007



Salado TX Dec. 2006



Sangre Rd March 2007



Okemah May 2007



Inola April 2007



Salado TX April 2007



Pickens Feb. 2007

Fall Death on Construction Site

Sean Kyle, 19, fell to his death Tuesday, May 24th, after a misstep while laying sheet metal on a roof at a Moore construction site, officials said.

Kyle died at Moore Medical Center shortly after the 4 p.m. accident at 1001 S Service Road in Moore

Kyle was working for a local construction company when he fell about 35 to 40 feet onto a concrete floor. Two other employees witnessed the accident. When the accident happened, Kyle was wearing a safety harness, but it was not attached to a line, Strickland said.



Sangre Rd and HWY 51 Stillwater, OK (Tim Riggs)



Shopping Center, San Antonio, TX (Ron Zerr, Wayne Anderson, Keenan Goolsby)

NASCAR Track to Be Replaced in 3 Months

The track in Bristol, TN is to be replaced by the next scheduled race in three months. The old track's concrete surface had four jointed segments. The surface could not withstand the stress of drastic temperature fluctuations and gradients of up to 50%. During such changes, track segments would push against each other at the joints—hard enough “to launch cantaloupe-sized chunks over 100 feet,” says Zudell. SMI opted for continuously reinforced concrete because it will allow the surface to move incrementally.

Baker Construction Services, Bluff City, Tenn., has a \$2.5-million earth-moving contract, including excavation for the 9-ft-wide, 8-ft-high, 170-ft-long precast concrete tunnel.



Baker used a GPS-guided grader to grade the subsurface. Crews placed 13,000 sq yd of concrete for the base of the oval track and covered it with a 17-in.-thick concrete layer placed within rebar spaced every 4.5 inches. “It’s a very thick mat of steel,” says Rob Ford, project coordinator with Baker Concrete Construction, Monroe, Ohio. (The firm is unrelated to Baker Construction Services.)

Illegal Immigration Crackdown in Mississippi

The Mississippi state Department of Transportation officially says it requires all contractors to follow federal immigration laws, but the recent arrests of dozens of undocumented workers on the Coast and the words of a top-ranking MDOT official suggest otherwise.

On one side of the immigration debate, some blame the federal government for being far too soft on companies that seem to mock the law by hiring illegal immigrants.

The Senate immigration bill, aimed at tightening border security and cracking down on companies that hire illegal immigrants, suffered a crushing defeat Thursday and most observers believe it's unlikely to be revived until after the 2008 election.

Meantime, some companies that hire illegal immigrants could be sending their workers to South Mississippi to earn a slice of more than \$1 billion in government money through MDOT. In the coming months MDOT will spend more than \$1 billion on construction projects in South Mississippi, including two U.S. 90 bridges. Central District Commissioner Dick Hall told the Sun Herald the agency does very little to verify the citizenship of those hired to do the work.

“We don't check for Social Security numbers. We don't check citizenship. We don't check for anything because we're not required to,” Hall said. For many U.S. companies, the search for local labor is often long and expensive. Over time they have found it much easier to hire ready and willing undocumented immigrants.

Following a five-month investigation in March, the U.S. Immigration and Customs Enforcement arrested 77 illegal immigrants, many of whom were working on the Biloxi-Ocean Springs bridge for Tarrasco Steel, a Greenville-based company owned by Jose Gonzalez and contracted on the MDOT project.